

MITEL

Navigator



A revolutionary PC-integrated IP phone that maximizes desktop productivity.

Mitel® Navigator is a sleek, silver phone device that fits neatly under a flat screen monitor and connects to the user's PC. Utilizing the computer's monitor, Navigator replaces the smaller color screens found on other phones and saves desktop "real estate." With its tightly knit PC interface, Navigator works seamlessly with applications, such as the award-winning Mitel Your Assistant and environments like Microsoft® Office Communicator 2005, for enhanced communications functionality.

Feature Rich Phone

Navigator delivers all the features that users have come to expect from Mitel telephony solutions including a high-quality speaker phone, programmable keys, hold, call transfer, conference call, volume control, mute, redial, call forward, voice mail access and other must-have business functions. Its ergonomic design is highly intuitive to use and allows users to define their own functions via 24 programmable keys. These buttons can be used to launch PC applications, perform telephony functions or open documents or URLs. As a telephony endpoint, Navigator is "always on" and supports both the Session Initiation Protocol (SIP) and Mitel's own MiNET protocol.

Powerful PC Applications

Through the Navigator Task Bar, users can easily program context-sensitive phone keys and key groups. The interface also allows users to open documents, launch web sites and applications specific to their business, and program advanced telephony features, such as hot desking, conferencing, and others. Its high-quality speakers are used as the PC's audio. In addition to supporting telephony headsets, Navigator supports stereo headphones that can be used with the embedded, high-quality, full-duplex microphone and speakers for handsfree conference calling. When the PC plays music or other audio streams, Navigator uses a phone sensitive volume control in the event of an incoming or outgoing call.



it's about **YOU**

Navigator Phone Features:

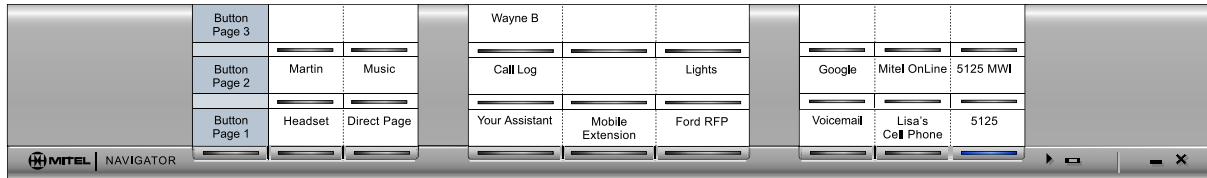
- Dual mode IP phone (MiNET, SIP)
- Handsfree Speakerphone operation (full duplex)
- Dual Port, 10/100 Mb switched Ethernet
- 2-line, 20-character white backlit “graphics” display with contrast control and auto dimming, for improved legibility
- Graphics display for future support of non-Latin (i.e. Asian, Cyrillic) characters
- 3 context-sensitive softkeys for feature-set customization
- 8 programmable multi-function keys with blue LED indicators
- 8 fixed-function keys: Hold, Superkey, Message, Speaker, Mute, Redial, Cancel, Transfer/Conference
- 3 of the fixed keys (Message, Mute, and Speaker) have visual LED indication of use
- Icon Button Labeling for Global Markets
- Ringer/Volume up/down controls
- Superkey programming for easy access to PBX telephone system features
- Use the device to play music from the computer and have the music stop when a phone call is initiated or received.
- Blue Backlit Dial Pad that automatically dims when not in use, but is activated when phone is used
- Dedicated telephony headset jack
- Dedicated PC headset jack
- Speed Calling
- Call Forward
- Call Hold (Place/Retrieve)
- Call Transfer
- Conference Call Setup
- Voice mail access – large message waiting lamp with blue LEDs
- Direct Page Send/Receive
- Last number redial
- Off-Hook Voice Announce

- On-hook dial
- On-Hook Call Announce (Paging Receive Capability)
- Do Not Disturb
- Hearing Aid Compatible Handset (Release 2 Handset)
- Automatic audio switching between PC audio and Phone audio
- Adjustable-height stand, designed to fit under most flat screen monitors
- 802.3af compliant
- Accepts standards based (IEEE 802.3af) power over the LAN via spare pair to signal pair, or supports 48 VDC Ethernet / AC Power wall adapter
- Compression support: G.711, G.729
- Supports IEEE 802.1p/q for Voice Quality of Service

Navigator Task Bar Features:

The Navigator Task Bar is a PC Application that provides on-screen programming and labeling of the Navigator’s programmable multi-function keys. Features include:

- Support for 24 programmable, self-labeling buttons in three key groups
- Launch PC applications from Navigator Task Bar or button on phone
- Open documents from Navigator Task Bar or button on phone
- Launch URLs from Navigator Task Bar or button on phone
- Program and label telephony features: Speed Calls, Music, Night Answer, Account Code (Verified and Non-Verified), Hot Desking, Phone Book, Speak@Ease, ACD, Auto Answer, Paging, Call Pickup, Call Back, Headset, Make Busy, Camp On, Override, Do Not Disturb, Direct Page, Advisory Message, Flash, Meet Me Answer, Emergency Call, Tag Call, Swap, Release, Forwarding, Superkey, Redial, Message, Hold, Transfer/Conference, Cancel
- HTML / CSTA API Toolkit available for applications development



Navigator Task Bar Application Expanded View

Multi-Language Support

- Supported languages for MiNET: English, French, Spanish, German, Dutch, Italian, Portuguese, Chinese and Russian
- Supported languages for SIP: English, Dutch, French, German and Spanish

Dual Mode

Supports both SIP and Mitel IP (MiNET) protocols

Dual Port

10/100 Mb switched Ethernet

Compression Support

G.711, G.729

Voice QoS

Supports IEEE 802.1p/q for Quality of Service

Powering Options

Accepts standards-based (IEEE 802.3af) power over the LAN via spare pair or signal pair, or supports 48 VDC Ethernet/AC Power wall adapter

Environmental Conditions

	Temperature	Humidity
Operational	+4°C – +40°C	34%
Storage	-25°C – +66°C	15%

Regulatory Standards

- EMC**
- CANADA: ICES-003 Issue 3
 - USA: CFR Title 47, Part 15 (CLASS B)
 - EU: R&TTE directive (1999/5/EC) EN55024:1998 EN55022:1998
- Safety**
- CANADA: CAN/CSA-C22.2 No. 60950-00
 - USA: UL60950 ANSI/NFPA 70
 - EU: R&TTE directive (1999/5/EC) EN60950: 2000

Hardware Features

- Dedicated telephony headset jack
- Dedicated PC headset jack
- Hearing aid compatible (HAC) handset
- Adjustable-height stand

System Requirements

- Mitel 3300 Integrated Communications Platform (ICP), Release 6.1 (UR1)
- Mitel Teleworker Solution, Release 4.0

Navigator Specifications

Port	AC Adapter		PROCESSOR			DSPs		Silicon
			Power Consumption	Type	Speed	DSPs	Speed	
2	Input:	110V 50-60 Hz or 220V 50 Hz	8.0 W	ARM946E - S	140 MHz	1	74 Mhz	0.18 μ CMOS
	Output:	24VDC 1.7A / 48VDC LAN Power						

RAM	ROM	Voice Traffic	Signaling	Voice QoS	Size (LxWxH)	Weight	CODEC/Compression	MTBF Rate:
16 MBytes	4 MBytes	RTP over UDP	MiNET over TCP Session Initiation Protocol (SIP)	IEEE 802.1p/q	Phone Bar: 14.5" x 4.5" x 3.25" ** Handset & Cradle: 2.5" x 5" x 5" (*The Navigator Phone is adjustable in height from 3.25 up to 4.25 inches.)	1.5 lbs	G.711, G.729	10 Years

North America
Tel: (613) 592 2122
Fax: 1 800 648 3579

Latin America
Tel: (613) 592 2122
Fax: 1 800 648 3579

UK
Tel: +44 (0)1291 430000
Fax: +44 (0)1291 430400

France
Tel: +33 (0)1 61 37 00 90
Fax: +33 (0)1 61 37 00 99

Benelux
Tel: +31 (0)30 85 00 030
Fax: +31 (0)30 85 00 031

Italy
Tel: +39 02 2130231
Fax: +39 02 21302333

Germany, Switzerland, Austria
Tel: +49 (0)211 5206480
Fax: +49 (0)211 52064899

Portugal and Spain
Tel: +34 91 490 5300
Fax: +34 91 490 5301

Middle East
Tel: +971 4 3916721
Fax: +971 4 3915288

South Africa
Tel: +27 82 559 8688
Fax: +27 11 784 6916

Asia-Pacific
Tel: +852 2508 9780
Fax: +852 2508 9232

South Pacific
Tel: +61 2 9023 9500
Fax: +61 2 9023 9501

www.mitel.com



THIS DOCUMENT IS PROVIDED TO YOU FOR INFORMATIONAL PURPOSES ONLY. The information furnished in this document, believed by Mitel to be accurate as of the date of its publication, is subject to change without notice. Mitel assumes no responsibility for any errors or omissions in this document and shall have no obligation to you as a result of having made this document available to you or based upon the information it contains.

M MITEL (design) is a registered trademark of Mitel Networks Corporation. All other products and services are the registered trademarks of their respective holders.

© Copyright 2006, Mitel Networks Corporation. All Rights Reserved.

GD 10324 PN 51009976RA-EN